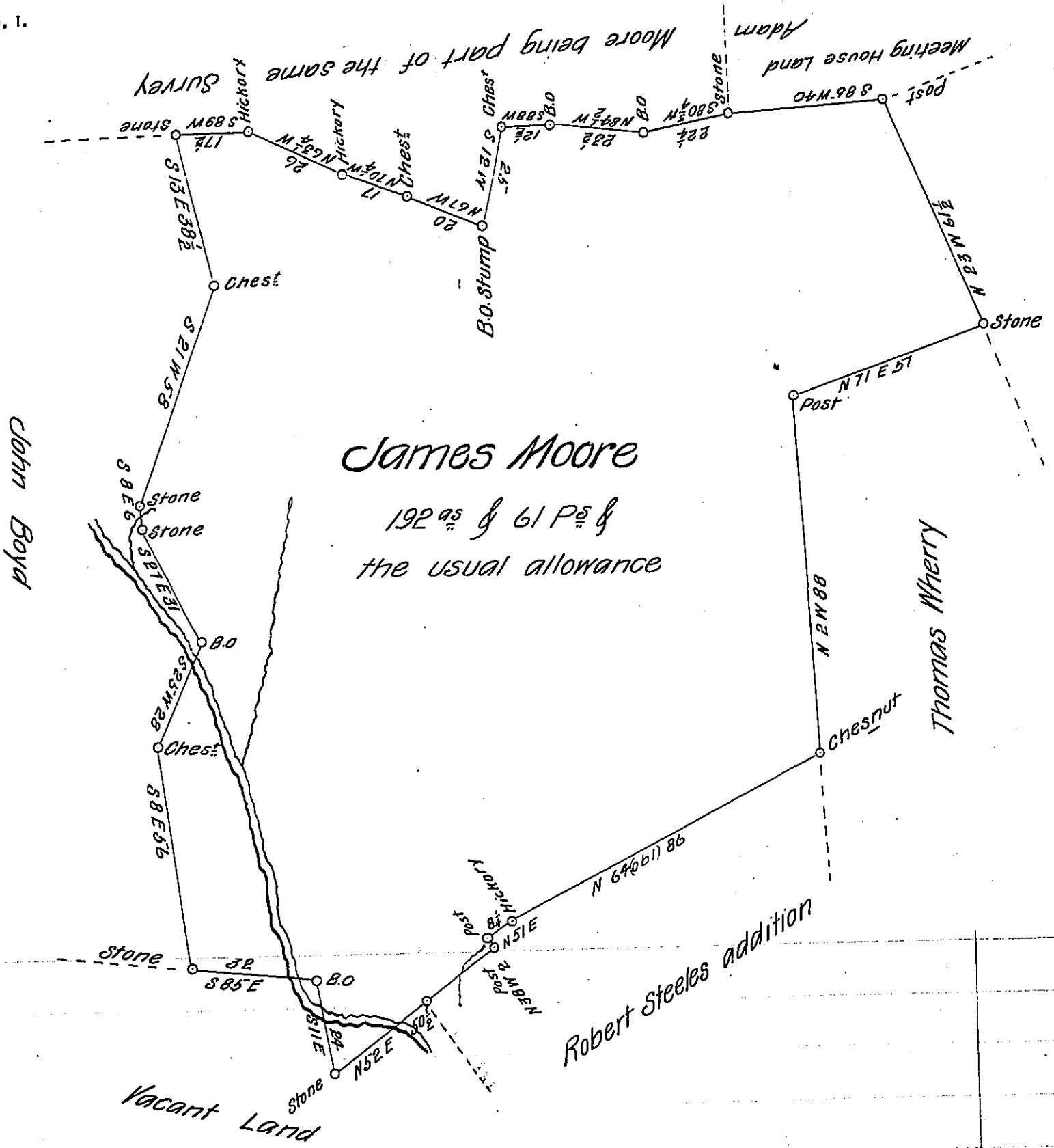


FORM No. 1.



A draught of a tract of land situate in Martick township in the County of Lancaster. Containing one hundred and Ninety two acres and sixty one perches and the usual allowance of six P. Cent for Roads, being part of a larger tract containing 266 acs -- & the allowance. By Warrant dated the 28th day of February A. D. 1755. Granted unto James Moore. Surveyed the above described tract of land the 12th of January A. D. 1810 for Samuel Eshleman

To Andrew Porter Esq^r P^r Jacob Hibshman D. S.

Surveyor General.

IN TESTIMONY that the above is a copy of the original remaining on file in the Department of Internal Affairs of Pennsylvania, made conformably to an Act of Assembly approved the 16th day of February, 1833, I have hereunto set my Hand and caused the Seal of said Department to be affixed at Harrisburg, this sixth day of February 1906.

George B. Pearson
Secretary of Internal Affairs.